






2

FEBRUARY 2026

Monday	Tuesday	Wednesday	Thursday	Friday	Saturday	Sunday
						1 Office closed
• AMPP (3-6pm) 2	3	• AMPP (3-6pm) 4	• Virtual housing clinic 5 • AMPP (3-6pm)	• AMPP (3-6pm) 6 • Family Play Group 10:00am-11:30am	• Postures for life 7 Yoga for health 	8 Office closed
• AMPP (3-6pm) 9	10 Valentines' Day chocolate candy activity	• AMPP (3-6pm) 11	• Virtual housing clinic 12 • AMPP (3-6pm)	• Grandparent and Kinship caregiver support group 13 • Family Play Group 10:00am-11:30am	• Ikigai Unidos por el Amor support group 14 	15 Office closed
• Presidents day office closed 16 	17	• AMPP (3-6pm) 18	• Virtual housing clinic 19 • AMPP (3-6pm)	• AMPP (3-6pm) 20 • Family Play Group 10:00am-11:30am	21 Office closed	22 Office closed
• AMPP (3-6pm) 23	24	• AMPP (3-6pm) 25	• Virtual housing clinic 26 • AMPP (3-6pm)	27	28 Office closed	

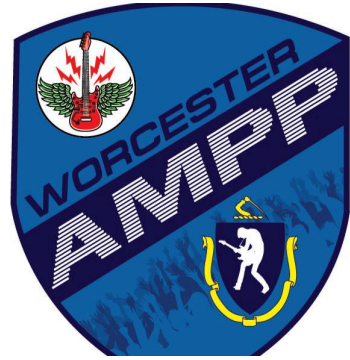
February, 2026

Call or Email

508-796-1411

wfrc@youinc.org

for information or to register



AMPP

Arts and Music Police Partnership

Free art and music program for teens
ages 14-17 run by the Worcester Police
Department.

Mondays, Wednesdays, & Fridays
3:00pm-6:00pm

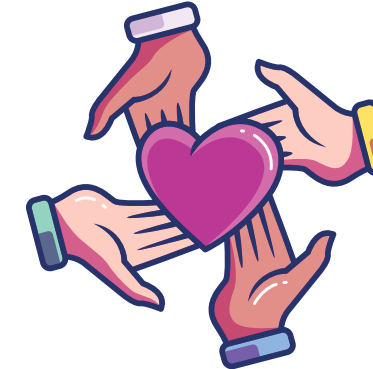


Housing Clinic

Join us virtually to connect directly with RCAP Solutions and CMHA.
Get assistance navigating RAFT and other housing-related
applications.

*Register, to receive link to attend.

Thursdays 2:30pm-3:30pm



IKIGAI Support Group Unidos por el Amor

Connect with other (Spanish speaking) parents raising
children with special needs.

Once monthly registration required

3:30pm-5:30pm



Yoga Class

For all family members!

Explore the transformative potential of breath and movement
through the practice of yoga.
1st Saturday of each month 10:00am



508 C.H.E.E.R.S

A youth empowerment program designed to
uplift young individuals through mentorship,
community service, mutual aid projects, and the
creation of growth pathways.

Wednesdays, Thursdays, & Fridays
4:00pm-8:00pm



Parent/Child Playgroup

Come join the WFRC and WFP for an engaging
playgroup filled with fun activities and
opportunities to socialize with other children and
caregivers!

Fridays 10:00am-11:30am